



Our team of experienced consultants provides a “one stop” approach for total project delivery, from *feasibility studies* to *project commissioning*, offering our clients highly recommended design solutions that meet their cost and time specifications.



REGISTRATION NO: CC/2014/02930
VAT REGISTRATION NO: 6482463-01-5
SOCIAL SECURITY REG. NO: 30084984

Tel: +264 61 300 333 / +264 81 3266554

Email: shashi.consult@gmail.com

54 Jenner Street, Windhoek West
P.O Box 24285
Windhoek
Namibia

Key Personnel

We have one of the most versatile engineers with a proven track record in electrical, civil, structural, mechanical, project management & other related business.



Shali Simson Shikongo, Inc. Eng
B-Tech Electrical Engineering



Lukas Shatipamba (Pr-Eng-In-TR)
B-Eng Electrical Engineering



Claudia Shuumbwa, Inc. Eng
B-Tech Electrical Engineering



Sylvester Shapwa, Inc. Eng
B-Tech Mechanical Engineering



Hango Amunyela
Geospatial Technologist



The group's associate partners are all Namibian Citizen

About Us

- ⇒ The services provided range from feasibility assessment/studies, marketing and investment studies to design, documentation, tender evaluation, construction supervision & plant commissioning, Electrical Asset Valuation, meter audit, project management and training of junior Engineers and Technologists.
- ⇒ For global integration, we are helping our clients gain accreditation with the regulating bodies.
- ⇒ We also specialise in safety and reliability assessment of all projects to provide independent assurance to our clients that the latest safety requirements are in compliance with the relevant municipalities or Local Authority

RESOURCES

- ⇒ Auto cad 2020
- ⇒ Computer work station equipped with Laptops
- ⇒ Printers and Plotter
- ⇒ Microsoft Office 2010 (Word, Program, Power point, Excel etc.)
- ⇒ ReLux (Light Simulation Software)
- ⇒ DigSilent 15.2 (Power Simulation Software)
- ⇒ Retic Master (Power Simulation Software)
- ⇒ Power Quality Analyser — (Vega T78)
- ⇒ Global Positioning System (GPS) Devices
- ⇒ Volkswagen 2.0, 4 x 4, Diesel
- ⇒ Earth resistivity tester, Earth rotation tester and earth leakage tester



Core Services

Electrical Engineering

Shashi Consulting Engineers offers the following electrical engineering based services:

- ⇒ Rural Electrification (Medium Voltage and Low Voltage)
- ⇒ Power generation, transmission and distribution,
- ⇒ Electronic systems, telecommunications, instrumentation & control systems,
- ⇒ Energy audits,
- ⇒ Building electrical services (design, Drawing and construction supervision),
- ⇒ Town servicing (Underground & Overhead electrical reticulation),
- ⇒ Electrical Power line Surveying and setting out,
- ⇒ Asset Evaluation, Master planning and Meter Auditing.

Mechanical Engineering

We further specialise in the latest design infrastructure and construction building techniques, mainly : water, solar heating systems, sanitation, natural gas and other gases analysis, ventilation and refrigeration, fire extinguish installations, automatic control- and operating equipment, laboratory installations, lifting and conveying systems.

Civil

More than being at the forefront of municipal civil networks design innovation, our firm does feasibility studies, preliminary assessment and reporting for civil projects, detailed design and documentation, roads, bulk earthwork designs, sewer & water reticulation design, flood level analysis, storm water detention and drainage design.

Structural

We are able to benefit our clients integrating structural forensic audits, commercial and industrial buildings, masonry structures, bridges, reinforced and pre-stressed concrete ,water retaining structures, , timber structures and high rise structures.

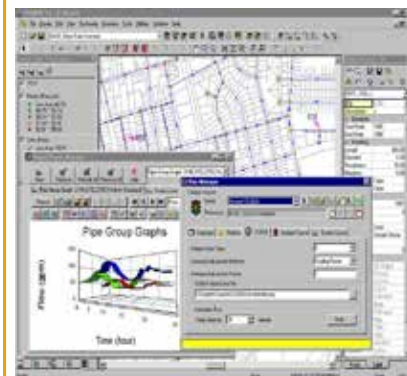
Roads

Our engineering approach uses the latest computer aided design, engineering and analysis tools to provide the most reliable road plans, geometric and pavement design, documentation and contract admin, parking layout, pavement engineering and management

Projects

Shashi Consulting Engineers is helping clients accomplish their multi-million dollars worth of project aspirations that are vastly durable coupled with lavishing commercial success.

PROJECT DESCRIPTION	CLIENT	PROJECT VALUE
ECB Electricity Distribution Network Assets Valuation	Electricity Control Board of Namibia	N\$ 2,500,000.00
CONSULTANCY SERVICES FOR THE ELECTRICAL NETWORK ASSESSMENT, COMPILATION OF AN ASSET REGISTER AND DETERMINATION OF OTHER REGULATED TARIFFS	Oranjemund Town Council	N\$ 486,403.20
Erongo Red Asset Verification and Evaluation	Erongo Red	N\$ 2,500,000.00
Office of the Prime Minister Electrical Power Audit—At the OPM head office	Office of the Prime Minister	N\$ 70,000.00
Review for Tariff Structure, Metering and Billing System	Aranos Village Council	N\$95,000.00
NORED Social Responsibility Electrification—Naango location	NORED Electricity	N\$ 750,000.00



Projects

Shashi Consulting Engineers is helping clients accomplish their multi-million dollars worth of project aspirations that are vastly durable coupled with lavishing commercial success.

PROJECT DESCRIPTION	CLIENT	PROJECT VALUE
2015 ELECTRICAL SERVICES KATI-MA LOGISTIC AND INDUSTRIAL PARK—Design, tender documentation and Construction Supervision	Namibia Development Corporation	Over N\$ 20,000,000.00
2016 NAMPOWER RULAR ELECTRIFICATION	NamPower	N\$ 20,000,000.00
PROJECT MANAGEMENT FOR OSHAKATI EXT 16 ELECTRICAL & TELECOM SERVICES Construction Supervision	Multi Solutions cc	N\$ 15,000,000.00
MICT Regional Head offices in Eenhana	Umoja Project Consultant	N\$ 14 000 000.00
Construction of Swapo Regional Head Office at Rundu	Umoja Project Consultant	N\$ 8 000 000.00
Otjinene Town Council Offices Walvisbay Naval Base	Umoja Project Consultant	N\$ 8 000 000.00
EIB / NAMPOWER Rural Electrification Project in Kavango west	EIB Through NAMPOWER	N\$ 10,000,000.00
2016/2017 OSHIKOTO & HARDAP RURAL ELECTRIFICATION—Design, tender documentation and Construction Supervision	Ministry of Mines and Energy	N\$ 8,300,000.00



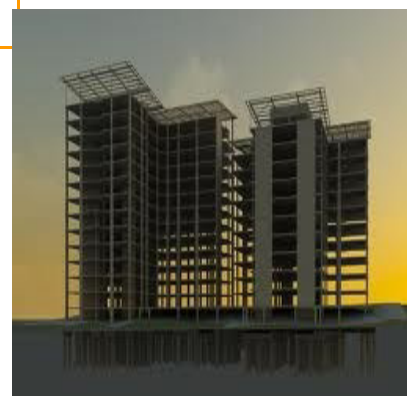
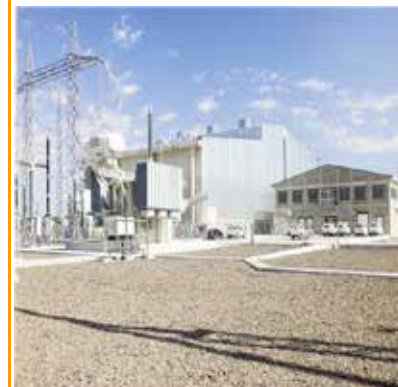
Projects

PROJECT DESCRIPTION	CLIENT	PROJECT VALUE
PHC Clinics at Okambembe, Oshuuli, Elundu, Omundundu, Omauni, Onangulo	Ministry of Health and Social Services	N\$ 8 000 000.00
Construction of Swapo Regional Head Office at Nkurenkuru	Umoja Project Consultant	N\$ 6 000 000.00
NEW REGIONAL OFFICE FOR THE MINISTRY OF INFORMATION AND COMMUNICATION TECHNOLOGY KATIMA MULILO - ZAMBEZI REGION Electrical Insta	Quantum Project Consultant	N\$ 4 200 000.00
Design, Documentation, Testing and Commissioning of 33/0.4kV electrical LV Network and reticulation at Otuani	Umoja Project Consultant	N\$ 6 000 000.00
Corridor 13 Settlement Office	D&P Environmental Project Consultant	N\$ 2 000 000.00
Construction of Swapo Regional Head Office at Rundu	Umoja Project Consultant	N\$ 8 000 000.00
Otjinene Town Council Offices Walvisbay Naval Base	Umoja Project Consultant	N\$ 8 000 000.00



Projects

PROJECT DESCRIPTION	CLIENT	PROJECT VALUE
2018/2019 Ministry Of Mines and Energy Rural Electrification project	Ministry of Mines and Energy	N\$ 1 425 290.00
Traditional Authority Offices (Batswana, Kambazembi, Swart-booï, Mashi, Hai Hom)	Umoja Project Consultant	N\$ 4 26 985.03
2015/2016 Ministry Of Mines and Energy Rural Electrification project	Ministry of Mines and Energy	N\$ 3 910 000.00
2017/2018 Ministry Of Mines and Energy Rural Electrification project	Ministry of Mines and Energy	N\$ 4 216 985.03
Electrification of J. Amwaalwa School Oshikoto Electrification	Ministry of Mines and Energy	N\$950 000.00
Provision of electrical reticulation design at Tsandi proper (portion), Tsandi Extension 1 & 3.	Tsandi village Council	N\$5,984,420.26
PROJECT MANAGEMENT FOR OMAHEKE RURAL ELETRIFICATION	Multi Solution	N\$ 2 000 000.00



Projects

PROJECT DESCRIPTION	CLIENT	PROJECT VALUE
GAM MV & LV RETICULATION— Design and Construction Supervision of the Engineering, Procurement and construction project	Ministry of Mines and Energy	N\$ 7,000,000.00
RUNDU ERF 115 ELECTRICAL SERVICING—Design, Tender documentation, construction supervision and commissioning	Plato Investments	N\$ 2,400,000.00
KALAHARI COMPLEX OSHAKAT BUILDING SERVICE— Design and construction supervision	Kalahari Holdings	N\$ 1,200,000.00
2015/2016 OSHIKOTO & HARDAP RURAL ELECTRIFICATION—Design, tender documentation and Construction Supervision	Ministry of Mines and Energy	N\$ 6,700,000.00
2016/2017 NORED Social Responsibility Electrification — Nkurenkuru & Helao Nafidi Town	NORED Electricity	N\$ 4, 629, 349.38
2016 NAMPOWER RULAR ELECTRIFICATION (3 years contract)	NAMPOWER	—
PROJECT MANAGEMENT FOR OMAHEKE RURAL ELETRIFICATION — Construction Supervision	Multi Solution cc	N\$ 2,000,000.00



Projects

PROJECT DESCRIPTION	CLIENT	PROJECT VALUE
NEW BUSINESS PARK ON ERF 901— ELECTRICAL SERVICES— CONSTRUCTION OF AN OUTDOOR SUBSTATION IN ORANJEMUND ,// KARAS REGION	ORANJEMUND TOWN COUNCIL	N\$ 274,746.97
KEETMANSHOOP RECREATIONAL CENTRE	KEETMANSHOOP COMMUNITY EMPOWERMENT CENTER	N\$ 1,891,817.00
CONSTRUCTION OF THE NEW RE- GIONAL OFFICE AT KATIMA MULILO IN ZAMBEZI REGION FOR MICT	MINISTRY OF IN- FORMATION & TECHNOLOGY	N\$ 1,450,770.31
CONSTRUCTION OF A SENIOR SEC- ONDARY SCHOOL AT GROOTFON- TEIN (PHASE 2) IN THE OTJOZONDJUPA REGION	MINISTRY OF EDUCATION	-
CONSTRUCTION OF MALEN- GALENGA PHC CLINIC	MINISTRY OF HEALTH	N\$ 1,460,385.18
CONSTRUCTION OF MYNSS HEAD- QUARTER ADMIN BLOCK—KHOMAS REGION	MINISTRY OF YOUTH AND SOCIAL SERVICES	-
ELECTRICAL SERVICES FOR THE CONSTRUCTION OF THE MINISTRY OF AGRICULTURE WATER AND FORESLY OFFICE AT GAM AND TSU- MKWE OFFICES	MINISTRY OF AGRI- CULTURE, WATER AND FORESTLY	N\$ 1,320,016.00

